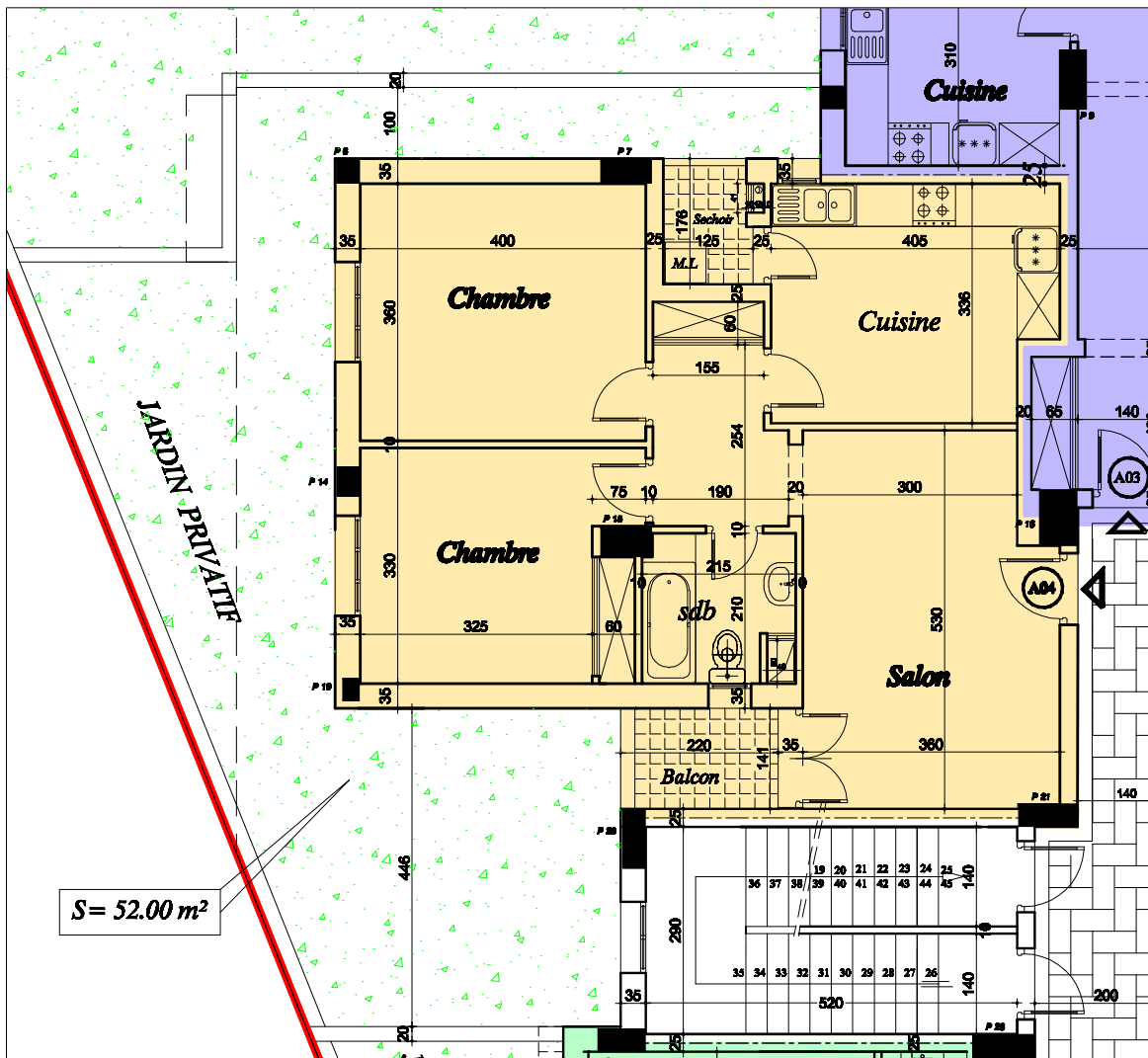


SOCIETE "LES PYRAMIDES" DE PROMOTION IMMOBILIERE
 PROJET DE CONSTRUCTION D'UN ENSEMBLE RESIDENTIEL
"DIAR CARTHAGE "

- BLOC - A -



S = 52.00 m²

- * Appartement : " A04 "
- * Niveau : R.D.C
- * Surface H.O : 87.10 m²
- * Jardin Privatif : S = 52.00 m²
- * Surface Totale : 98.42 m²

DECHARGE CLIENT

C.L.N =